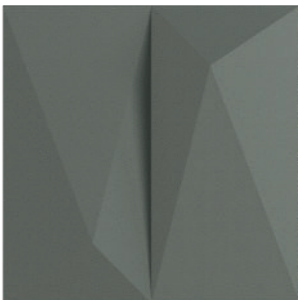




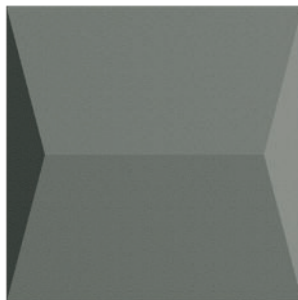
**Trio 4' x 4'**  
CRYSTAL 2424 // Layout CRYP-T6

TRIO from Artofix enhance your space while improving acoustics. Its predefined layouts make for hassle-free installation, as does its elegant design. Get inspired by the different configurations.

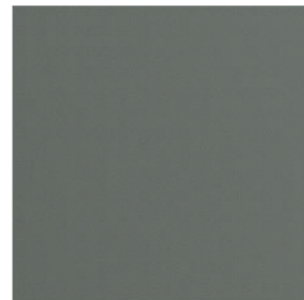
**AVAILABLE TILE MODELS :**



**Crystal**  
24 x 24 in  
610 x 610 mm



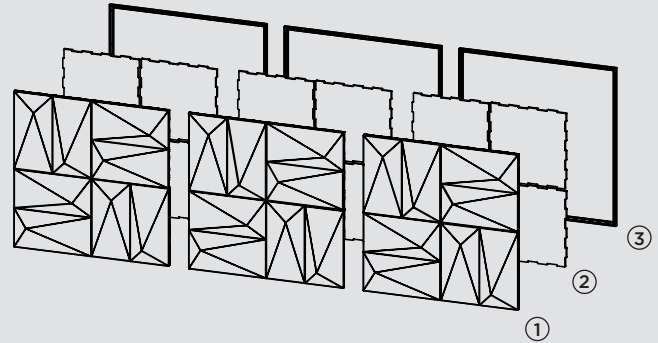
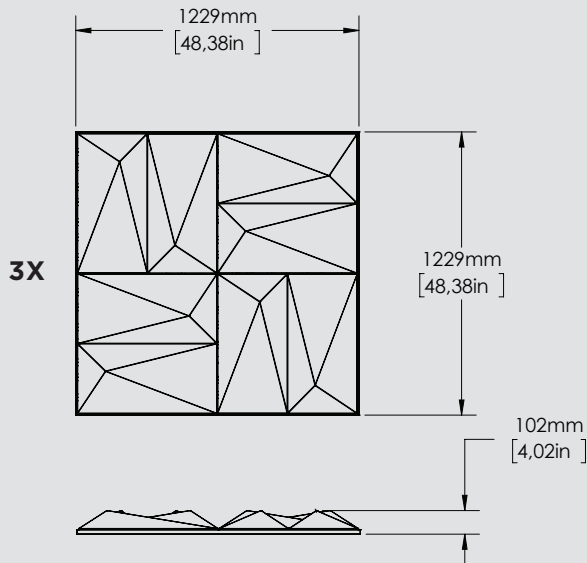
**Prism**  
24 x 24 in  
610 x 610 mm



**Zen**  
24 x 24 in  
610 x 610 mm

# TRIO

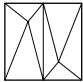
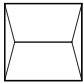

FORMAT 4' X 4'



## COMPONENTS

- ① Tiles
- ② Acoustics Lining (stone wool)
- ③ Artotrim-C1 pre-cut moldings (anodized aluminum)

## PRODUCT INFORMATION

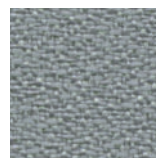
	Model	Dimensions W x H	Thickness	Acoustic Surface Area	Codes TRIO <sup>†</sup>	Artotrim-C1* (included)	Artoclips** (included)
	<b>Crystal</b> Trio 4 x 4 (12 tiles)	3 frames : 48,38 x 48,38 in 1229 x 1229 mm	4,02 in 102 mm	48 in <sup>2</sup> 4,46 m <sup>2</sup>	CRYP-4848-R-T-2335-****	12x (48 in)	48
	<b>Prism</b> Trio 4 x 4 (12 tiles)	3 frames : 48,38 x 48,38 in 1229 x 1229 mm	3,30 in 84 mm	48 in <sup>2</sup> 4,46 m <sup>2</sup>	PRIP-4848-R-T-2335-****	12x (48 in)	48
	<b>Zen</b> Trio 4 x 4 (12 tiles)	3 frames : 48,38 x 48,38 in 1229 x 1229 mm	0,93 in 24 mm	48 in <sup>2</sup> 4,46 m <sup>2</sup>	ZENP-4848-R-T-2335-****	12x (48 in)	48

## CHOICE OF FABRICS

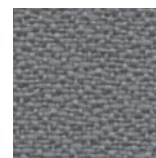
Anchorage Fabric 2335



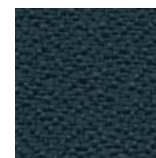
**White**  
2664



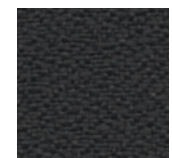
**Slate**  
2017



**Asteroid**  
2053



**Deep Water**  
2051



**Graphite**  
2079

### †Fabrics

Replace \*\*\*\* by the color number

### \*Pre-cut perimeter moldings

\*\*Tile retention clips at frame perimeter

### ANCHORAGE FABRICS

Anchorage 2335  
65% pre-consumer recycled polyester  
35% post-consumer recycled polyester

### FLAMMABILITY

ASTM-E-84  
CAN/ULC-S102.2

### ACOUSTIC PERFORMANCE\*\*\*

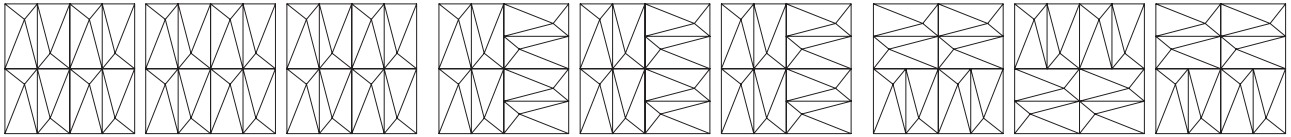
Noise Reduction Coefficient (Hz)  
NRC 0.85 : Crystal, Prism  
0.80 : Zen

# TRIO

FORMAT 4' X 4'

## TILE LAYOUT

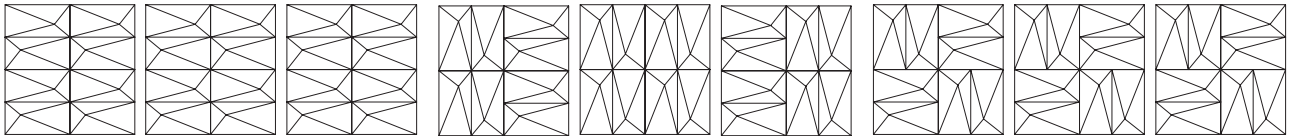
### Crystal



CRYP-T1

CRYP-T2

CRYP-T3

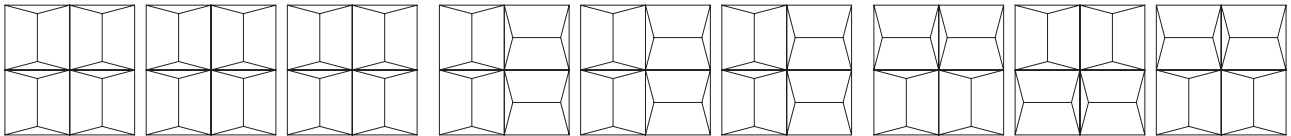


CRYP-T4

CRYP-T5

CRYP-T6

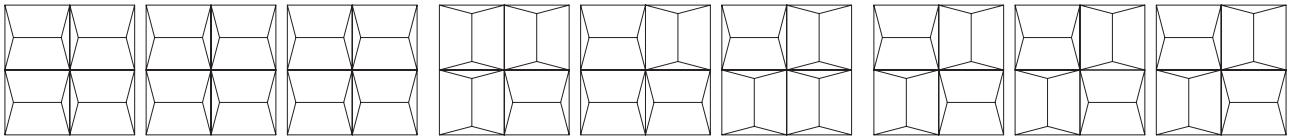
### Prism



PRIP-T1

PRIP-T2

PRIP-T3

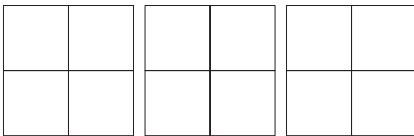


PRIP-T4

PRIP-T5

PRIP-T6

### Zen



ZENP-T1

\*\*\*Results determined through testing by an independent, certified laboratory that was conducted according to industry standards. ASTM C423 - Standard test method for sound absorption coefficients by the reverberation room method. See the Acoustic Performance sheet for more information.

Drawings not to scale. Do not use as template. The information contained in this document is the property of ARTOFIX. Reproduction is prohibited.

PRODUCT SHEET\_2024-04

+1.450.646.7555  
info@artofix.com

**artofix.com**